

# AI in Healthcare

—

## **IBM Watson Health**

Brenda Segaria

Pre-Sales Consultant IBM Watson Health Imaging

Jennifer Mele

Client Executive Provider Sales



IBM's statements regarding its plans, directions and intent are subject to change or withdrawal without notice at IBM's sole discretion.

Information regarding potential future products is intended to outline our general product direction and it should not be relied on in making a purchasing decision.

The information mentioned regarding potential future products is not a commitment, promise, or legal obligation to deliver any material, code or functionality. Information about potential future products may not be incorporated into any contract. The development, release, and timing of any future features or functionality described for our products remains at our sole discretion.

# Today's presenters

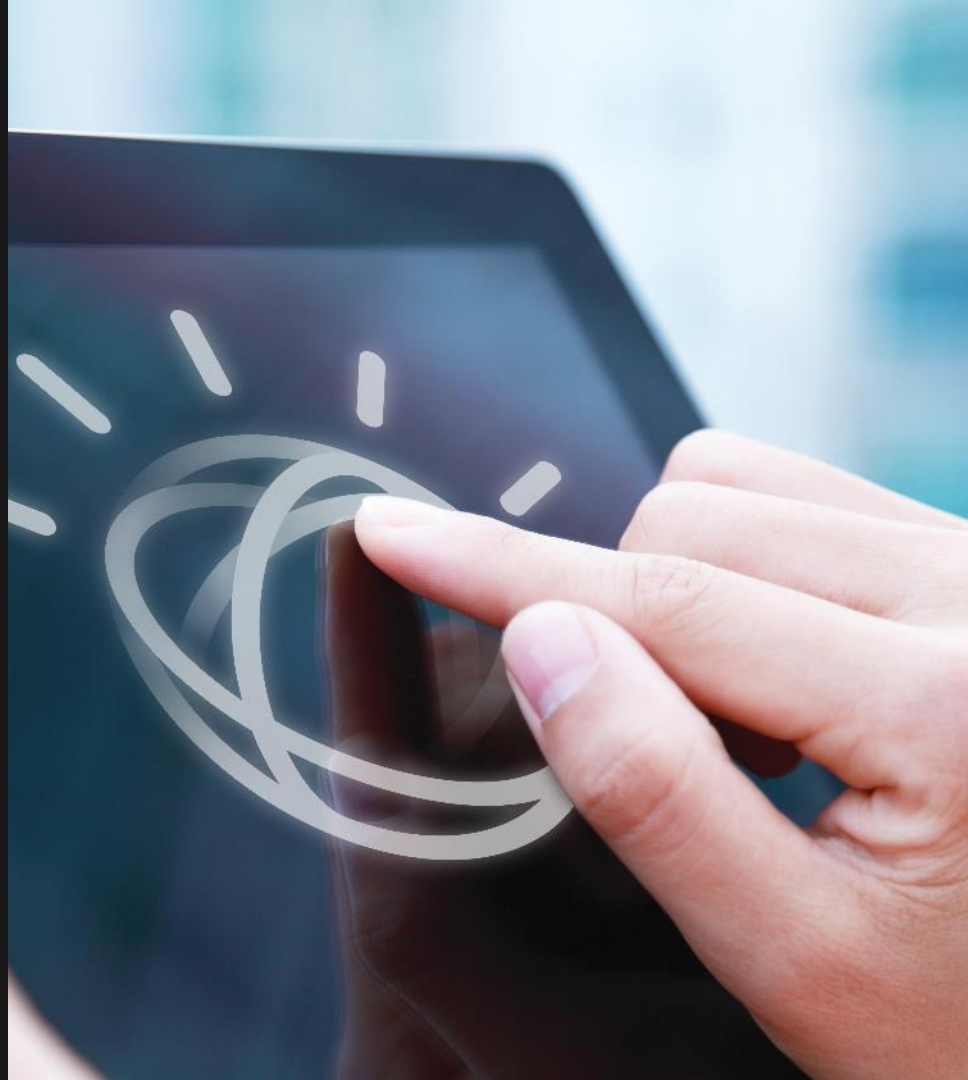


**Brenda Segaria**  
Pre-Sales Consultant  
Watson Health Imaging



**Jennifer Mele**  
Client Executive  
Watson Health Provider Sales

We bring the power of  
artificial intelligence to  
healthcare to expand the  
physician's view so they have  
greater confidence in their  
diagnostic and treatment  
decisions for their patients





# The power of Watson

Human + Machine = greater than the sum of its parts

## Humans excel at:



Common Sense



Dilemmas



Morals



Compassion



Imagination



Dreaming



Abstraction



Generalization

## AI systems excel at:



Natural  
Language



Pattern  
Identification



Locating  
Knowledge



Machine  
Learning



Eliminate  
Bias



Endless  
Capacity

# Imagine AI for medicine that aspires to

See  
expansively

Reads structured and  
unstructured data

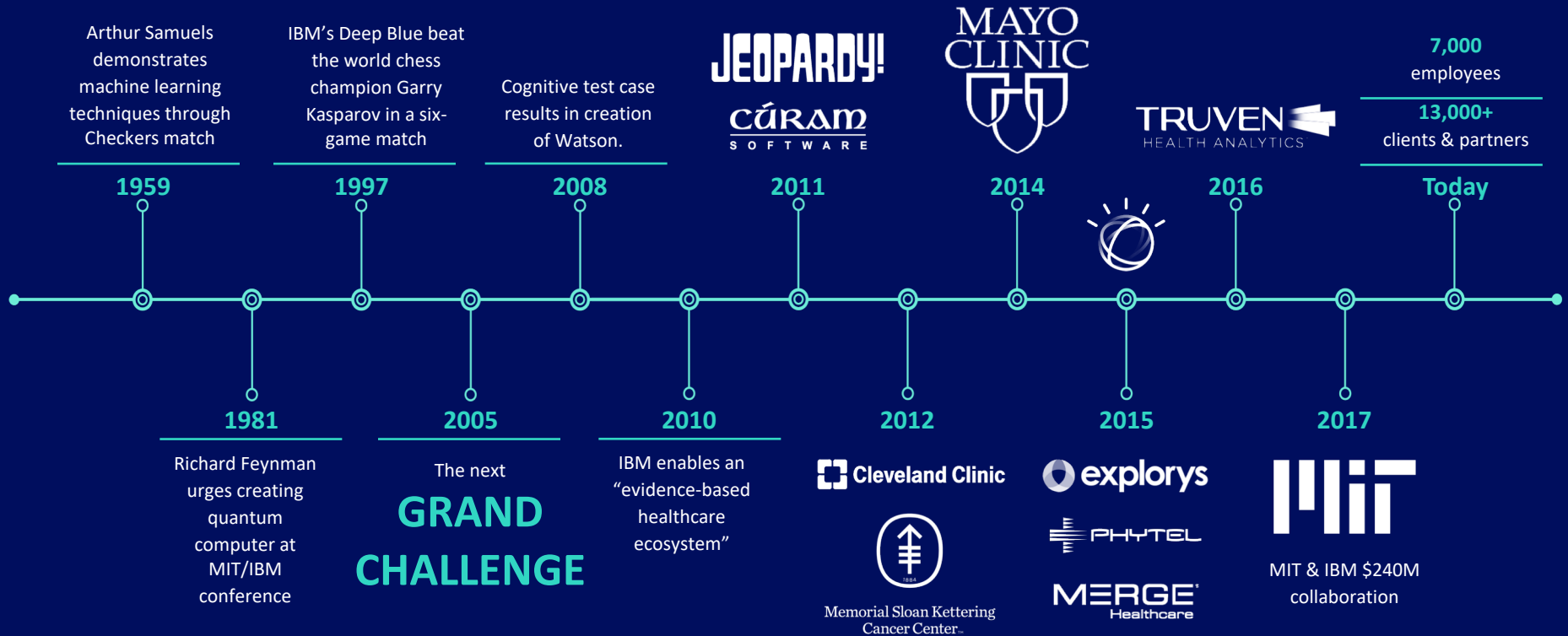
Recognize  
more reliably

Identifies  
contextually-relevant data

Communicate more  
objectively

Presents users with  
evidence-based findings

# AI at IBM



# Capabilities



Cloud



Content



Cognitive  
Computing



Collaboration

**200M+**  
claims  
**TRUVEN**  
HEALTH ANALYTICS™

**100M+**  
patient  
records  
**explorys**  
An IBM Company  
**PHYTEL**  
An IBM Company

**Billions**  
images  
managed  
**MERGE**  
Healthcare

**1.2M**  
medical  
abstracts

**3B+**  
reference  
points

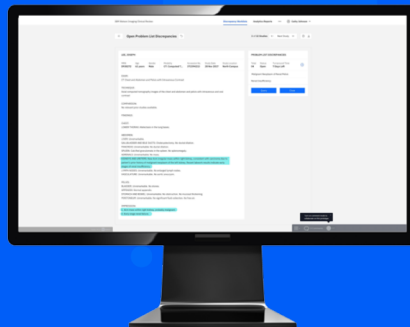
**4M+**  
drug  
patents

**40M+**  
research  
documents

# The IBM Watson Imaging AI Portfolio



IBM Watson Imaging  
Patient Synopsis



IBM Watson Imaging  
Clinical Review

**Accipio Ix™**

**maxQ™**  
Artificial Intelligence

Data in EMR systems are often...

A word cloud on a dark background with the word 'overwhelming' as the largest and most central term. Other words are arranged around it in various sizes and colors (blue, purple, and white). The words include: 'vast', 'inaccurate', 'out-of-date', 'irrelevant', 'frustrating', 'incomplete', 'unreliable', 'random', and 'disorganized'.

overwhelming

incomplete unreliable random disorganized

frustrating vast out-of-date inaccurate irrelevant

which can delay or distort care decisions

Data discrepancies  
existing in today's  
documentation can be  
harmful at both the  
patient and system level

There is a need to  
correctly report data at  
the patient level to  
optimize the broader  
healthcare system





Watson Imaging Clinical Review is a retrospective cognitive data review tool that helps support a reliable patient record in order to drive **accurate, timely, and coordinated care decisions**





Radiologists play a crucial, consultative role within the patient care team. Communication difficulties and information disparities, increasingly high output expectations, and numerous distractions throughout each day present growing challenges to this already complex role.

*IBM sponsored voice of customer study*

Watson Imaging Patient Synopsis is a radiologist-trained AI tool that **efficiently informs care decisions** made by clinicians. It extracts relevant patient information from the EHR and projects it via a single-view summary screen in sync with PACS... in seconds.



Watson Oncology Suite leverages AI to harness insights from cancer guidelines, literature, treatment options, clinical trials and patient records while integrating with existing work flows. It helps doctors and patients make **better-informed, evidence based treatment decisions** and **identifies more patients for more trials in less time**.



# Let us tell you more...

**Brenda.Segaria@ibm.com**

**Jennifer.Mele@ibm.com**

# Legal Disclaimer

© IBM Corporation 2018. All Rights Reserved.

The information contained in this publication is provided for informational purposes only. While efforts were made to verify the completeness and accuracy of the information contained in this publication, it is provided AS IS without warranty of any kind, express or implied. In addition, this information is based on IBM's current product plans and strategy, which are subject to change by IBM without notice. IBM shall not be responsible for any damages arising out of the use of, or otherwise related to, this publication or any other materials. Nothing contained in this publication is intended to, nor shall have the effect of, creating any warranties or representations from IBM or its suppliers or licensors, or altering the terms and conditions of the applicable license agreement governing the use of IBM software.

References in this presentation to IBM products, programs, or services do not imply that they will be available in all countries in which IBM operates. Product release dates and/or capabilities referenced in this presentation may change at any time at IBM's sole discretion based on market opportunities or other factors, and are not intended to be a commitment to future product or feature availability in any way. Nothing contained in these materials is intended to, nor shall have the effect of, stating or implying that any activities undertaken by you will result in any specific sales, revenue growth or other results.

Performance is based on measurements and projections using standard IBM benchmarks in a controlled environment. The actual throughput or performance that any user will experience will vary depending upon many factors, including considerations such as the amount of multiprogramming in the user's job stream, the I/O configuration, the storage configuration, and the workload processed. Therefore, no assurance can be given that an individual user will achieve results similar to those stated here.

All customer examples described are presented as illustrations of how those customers have used IBM products and the results they may have achieved. Actual environmental costs and performance characteristics may vary by customer.

IBM, the IBM logo, [ibm.com](http://ibm.com), and Watson Health are trademarks of International Business Machines Corp., registered in many jurisdictions worldwide. Other product and service names might be trademarks of IBM or other companies. A current list of IBM trademarks is available on the Web at "Copyright and trademark information" at [ibm.com/legal/copytrade](http://ibm.com/legal/copytrade).

# Forward Looking Statements

Certain statements contained in this presentation may constitute forward-looking statements within the meaning of the Private Securities Litigation Reform Act of 1995. Forward-looking statements are based on the company's current assumptions regarding future business and financial performance. These statements involve a number of risks, uncertainties and other factors that could cause actual results to differ materially, including the following: a downturn in the economic environment and client spending budgets; the company's failure to meet growth and productivity objectives; a failure of the company's innovation initiatives; risks from investing in growth opportunities; failure of the company's intellectual property portfolio to prevent competitive offerings and the failure of the company to obtain necessary licenses; cybersecurity and data privacy considerations; fluctuations in financial results; impact of local legal, economic, political and health conditions; adverse effects from environmental matters, tax matters and the company's pension plans; ineffective internal controls; the company's use of accounting estimates; the company's ability to attract and retain key personnel and its reliance on critical skills; impacts of relationships with critical suppliers; product quality issues; impacts of business with government clients; currency fluctuations and customer financing risks; impact of changes in market liquidity conditions and customer credit risk on receivables; reliance on third party distribution channels and ecosystems; the company's ability to successfully manage acquisitions, alliances and dispositions; risks from legal proceedings; risk factors related to IBM securities; and other risks, uncertainties and factors discussed in the company's Form 10-Qs, Form 10-K and in the company's other filings with the U.S. Securities and Exchange Commission (SEC) or in materials incorporated therein by reference. The company assumes no obligation to update or revise any forward-looking statements. These charts and the associated remarks and comments are integrally related, and are intended to be presented and understood together.

